



STANDARD CARE AND USE GUIDE

FREEZE THAW CYCLE & WINTER CONDITIONS

MOTORIZED ROLLING SHUTTERS OPENING PROCEDURE

Ensure the rollshutter does not have any snow or water build up on the curtain wall or on top of housing. If it does, use a snow brush, broom or towel to remove as much of this build up as possible.

If standing water or snow is not removed two potential issues can occur:

- The water/snow on the roll can freeze during the time the shutter is rolled up in the housing box.
- The rollshutter curtain will increase in size and will wedge itself in the housing box when rolled up with ice on it.



MOTORIZED ROLLING SHUTTERS CLOSING PROCEDURE

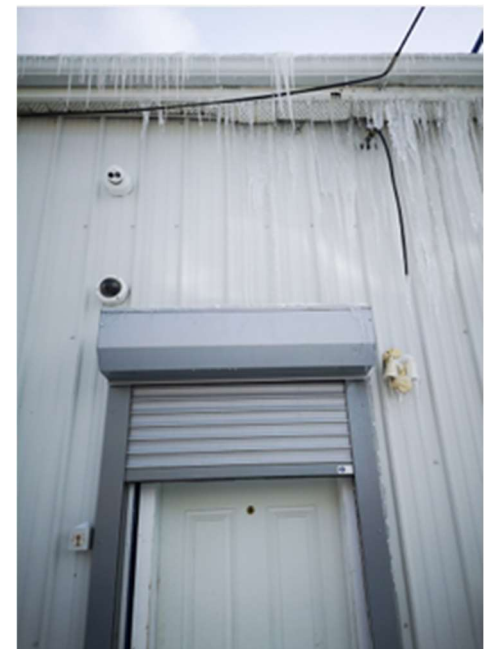
- ✓ Check to ensure the shutter path is clear of all obstruction (tools, shovels, brooms and garbage bins are often leaned against a window or door and forgotten)
- ✓ Ensure there is no snow or ice build up in the side tracks of the rollshutter
- ✓ Proceed to close the shutter. If any signs of struggle or resistance occur stop operation and check for obstructions. If nothing is found try and operate again.
- ✓ If signs of struggling operation continue with no visible obstructions or damage, stop operation and contact your supplier/service team. It is important to operate the rollshutter when it is directly in view.



It is **most important** to be cautious when there are freeze thaw cycles or large snow falls

Freeze Thaw = above zero with melting during the day, then below zero in the evenings so the melt turns to ice.

Large Snow Falls = Commercial snow clearing processes can blow forced snow towards shutters and create issues. Advise crews against blowing snow in shutter direction.



WARM IN WINTER ▪ COOL IN SUMMER ▪ SECURITY ALL YEAR LONG

CONTACT US
1-780-440-1934
sales@rollshutter.ca
www.rollshutter.ca

